



Ipswich QLD Professional

Race 5: GREAT NORTHERN BENCHMARK 62 Handicap - 2150m

04 January 2025 - 14:24



Track Rating: Soft 5, Weather: Fine, Rail Position: True

Section		Overall	2000m	1800m	1600m	1400m	1200m	1000m	Last 600m					
Field Times		2:15.04 (0:12.41)	2:02.63 (0:11.31)	1:51.32 (0:11.39)	1:39.93 (0:12.35)	1:27.58 (0:12.89)	1:14.69 (0:13.12)	1:01.57 (0:13.11)	0:36.10					
Rank	TAB	Horse/Jockey	Barrier	Top Speed [km/h]	Fastest Section								Distance Travelled [m]	
1	5	RADEGAST Justin Huxtable	5	63.7 600m	0:11.60 600m	2:15.04 [1] (0:12.78)	2:02.26 [7] (0:11.61)	1:50.65 [7] (0:11.87)	1:38.78 [7] (0:12.72)	1:26.06 [7] (0:12.73)	1:13.33 [7] (0:12.94)	1:00.39 [7] (0:12.95)	0:34.97	
2	1	VENTUROUS Ryan Wiggins	9	65.1 2000m	0:11.24 2000m	2:15.14 [2] (0:12.48)	2:02.66 [4] (0:11.24)	1:51.42 [1] (0:11.39)	1:40.03 [1] (0:12.35)	1:27.68 [1] (0:12.89)	1:14.79 [1] (0:13.12)	1:01.67 [1] (0:13.11)	0:36.20	-1
3	7	DECARBONISE Micheal Hellyer	4	64.2 2000m	0:11.55 2000m	2:15.26 [3] (0:12.41)	2:02.85 [1] (0:11.55)	1:51.30 [5] (0:11.85)	1:39.45 [5] (0:12.69)	1:26.76 [5] (0:12.68)	1:14.08 [5] (0:12.94)	1:01.14 [5] (0:12.93)	0:35.82	+5
4	3	GIDDY GAN'S JOY Michael Cahill	6	64.7 2000m	0:11.42 2000m	2:15.29 [4] (0:12.48)	2:02.81 [3] (0:11.42)	1:51.39 [2] (0:11.70)	1:39.69 [4] (0:12.67)	1:27.02 [4] (0:12.75)	1:14.27 [4] (0:12.96)	1:01.31 [4] (0:12.95)	0:35.93	+5
5	11	REEL WILD Emily Lang	8	63.5 600m	0:11.62 600m	2:15.54 [5] (0:13.02)	2:02.52 [8] (0:11.66)	1:50.86 [8] (0:11.86)	1:39.00 [8] (0:12.83)	1:26.17 [8] (0:12.53)	1:13.64 [8] (0:12.83)	1:00.81 [8] (0:12.84)	0:35.64	+5
6	4	TOOLATEMATE Jace McMurray	2	65.1 1800m	0:11.48 2000m	2:15.60 [6] (0:12.48)	2:03.12 [5] (0:11.48)	1:51.64 [4] (0:11.52)	1:40.12 [3] (0:12.52)	1:27.60 [3] (0:12.83)	1:14.77 [3] (0:12.91)	1:01.86 [3] (0:13.07)	0:36.32	+0
7	9	CLASSIQUE GAL Samantha Collett	7	65.6 1800m	0:11.41 1800m	2:15.68 [7] (0:12.42)	2:03.26 [2] (0:11.48)	1:51.78 [3] (0:11.41)	1:40.37 [2] (0:12.67)	1:27.70 [2] (0:12.80)	1:14.90 [2] (0:12.88)	1:02.02 [2] (0:13.01)	0:36.60	+5
8	6	APFEL Luke Dempsey	3	64.7 1800m	0:11.54 2000m	2:15.83 [8] (0:12.73)	2:03.10 [6] (0:11.54)	1:51.56 [6] (0:11.89)	1:39.67 [6] (0:12.54)	1:27.13 [6] (0:12.66)	1:14.47 [6] (0:12.87)	1:01.60 [6] (0:12.95)	0:36.17	-4

Scratched: Hit 'Em Up (#8), Trautman (#2), Son Of Satono (#10)

[] Ranking at each section and finish
 -:-:- No data available at this section
 NA No data available

SCN Saddle cloth number
 DNF Did not finish
 DNT Did not track



Ipswich QLD Professional

Race 5: GREAT NORTHERN BENCHMARK 62 Handicap - 2150m

04 January 2025 - 14:24



Track Rating: Soft 5, Weather: Fine, Rail Position: True

Section										Last 600m		
Field Times		800m	600m	400m	200m							
		0:48.46 (0:12.36)	0:36.10 (0:11.73)	0:24.37 (0:12.02)	0:12.35 (0:12.35)							0:36.10
Rank	TAB	Horse/Jockey	Barrier	Top Speed [km/h]	Fastest Section					Margin	Distance Travelled [m]	
1	5	RADEGAST Justin Huxtable	5	63.7 600m	0:11.60 600m	0:47.44 [8] (0:12.47)	0:34.97 [8] (0:11.60)	0:23.37 [8] (0:11.75)	0:11.62 [8] (0:11.62)	2:15.04	0:34.97	
2	1	VENTUROUS Ryan Wiggins	9	65.1 2000m	0:11.24 2000m	0:48.56 [1] (0:12.36)	0:36.20 [1] (0:11.73)	0:24.47 [1] (0:12.02)	0:12.45 [1] (0:12.45)	0.6L	0:36.20	-1
3	7	DECARBONISE Micheal Hellyer	4	64.2 2000m	0:11.55 2000m	0:48.21 [5] (0:12.39)	0:35.82 [5] (0:11.69)	0:24.13 [4] (0:11.90)	0:12.23 [2] (0:12.23)	1.27L	0:35.82	+5
4	3	GIDDY GAN'S JOY Michael Cahill	6	64.7 2000m	0:11.42 2000m	0:48.36 [4] (0:12.43)	0:35.93 [4] (0:12.06)	0:23.87 [6] (0:11.90)	0:11.97 [6] (0:11.97)	1.47L	0:35.93	+5
5	11	REEL WILD Emily Lang	8	63.5 600m	0:11.62 600m	0:47.97 [7] (0:12.33)	0:35.64 [7] (0:11.62)	0:24.02 [7] (0:11.83)	0:12.19 [7] (0:12.19)	2.93L	0:35.64	+5
6	4	TOOLATEMATE Jace McMurray	2	65.1 1800m	0:11.48 2000m	0:48.79 [3] (0:12.47)	0:36.32 [3] (0:11.81)	0:24.51 [3] (0:11.97)	0:12.54 [3] (0:12.54)	3.26L	0:36.32	+0
7	9	CLASSIQUE GAL Samantha Collett	7	65.6 1800m	0:11.41 1800m	0:49.01 [2] (0:12.41)	0:36.60 [2] (0:11.95)	0:24.65 [2] (0:12.13)	0:12.52 [4] (0:12.52)	3.75L	0:36.60	+5
8	6	APFEL Luke Dempsey	3	64.7 1800m	0:11.54 2000m	0:48.65 [6] (0:12.48)	0:36.17 [6] (0:11.65)	0:24.52 [5] (0:12.00)	0:12.52 [5] (0:12.52)	4.63L	0:36.17	-4

Scratched: Hit 'Em Up (#8), Trautman (#2), Son Of Satono (#10)

[] Ranking at each section and finish
 -:-:- No data available at this section
 NA No data available

SCN Saddle cloth number
 DNF Did not finish
 DNT Did not track



Horse/Jockey Name	Radegast
Final Rank	1
Fastest Section Time (Section)	0:11.60 (600m)
Top Speed [km/h] (Section)	63.7 (600m)
Race State	Finished



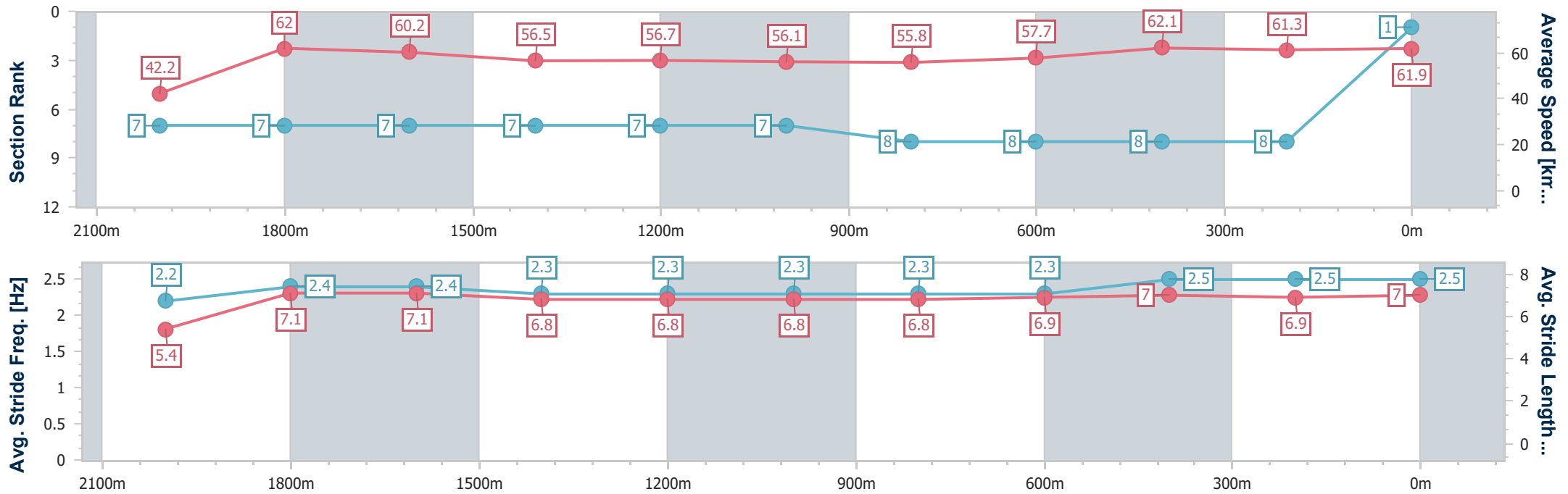
Ipswich QLD Professional
Race 5: GREAT NORTHERN BENCHMARK 62 Handicap - 2150m



04 January 2025 - 14:24

Track Rating: Soft 5, Weather: Fine, Rail Position: True

Section	Overall	2000m	1800m	1600m	1400m	1200m	1000m	800m	600m	400m	200m
Section Times	2:15.04 [1] (0:12.78)	2:02.26 [7] (0:11.61)	1:50.65 [7] (0:11.87)	1:38.78 [7] (0:12.72)	1:26.06 [7] (0:12.73)	1:13.33 [7] (0:12.94)	1:00.39 [7] (0:12.95)	0:47.44 [8] (0:12.47)	0:34.97 [8] (0:11.60)	0:23.37 [8] (0:11.75)	0:11.62 [8] (0:11.62)
Average Speed [km/h]	42.2	62.0	60.2	56.5	56.7	56.1	55.8	57.7	62.1	61.3	61.9
Top Speed [km/h]	60.1	63.2	63.3	57.6	57.9	56.9	56.2	61.3	63.7	62.4	63.5
Avg. Dist. to Rail [m]	3.2	0.8	1.4	0.2	0.6	1.4	1.6	0.3	0.5	0.9	2.6
Avg. Stride Freq. [Hz]	2.2	2.4	2.4	2.3	2.3	2.3	2.3	2.3	2.5	2.5	2.5
Avg. Stride Length [m]	5.4	7.1	7.1	6.8	6.8	6.8	6.8	6.9	7.0	6.9	7.0



- [] Ranking at each section and finish
- .-.- No data available at this section
- NA No data available



Horse/Jockey Name	Venturous
Final Rank	2
Fastest Section Time (Section)	0:11.24 (2000m)
Top Speed [km/h] (Section)	65.1 (2000m)
Race State	Finished



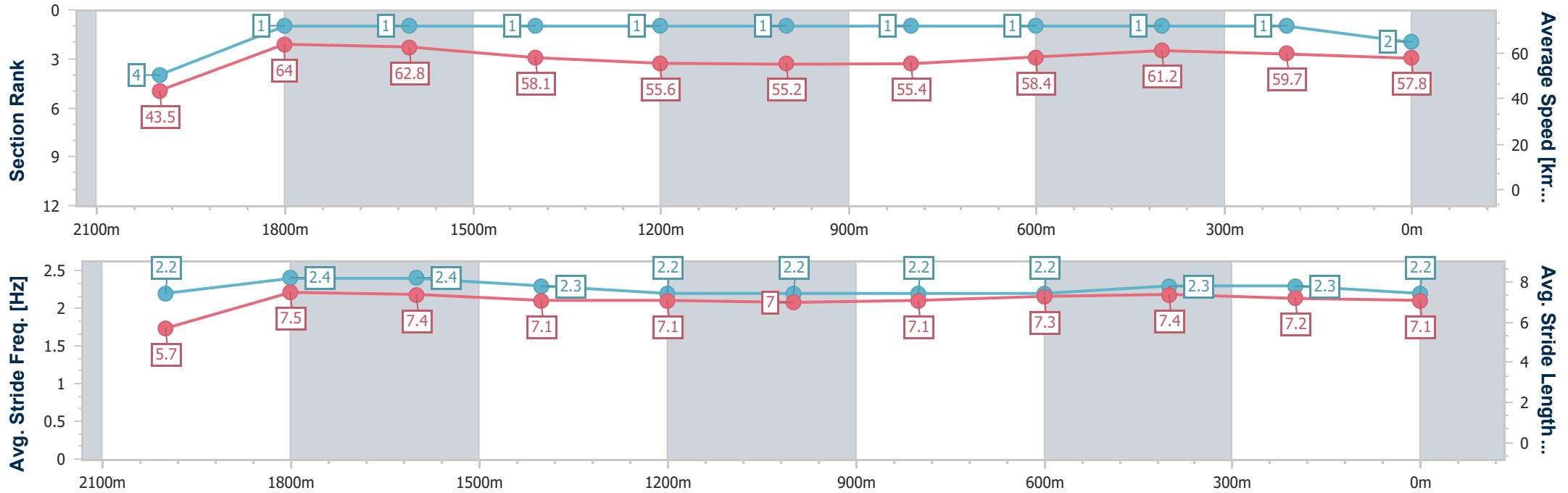
Ipswich QLD Professional
Race 5: GREAT NORTHERN BENCHMARK 62 Handicap - 2150m



04 January 2025 - 14:24

Track Rating: Soft 5, Weather: Fine, Rail Position: True

Section	Overall	2000m	1800m	1600m	1400m	1200m	1000m	800m	600m	400m	200m
Section Times	2:15.14 [2] (0:12.48)	2:02.66 [4] (0:11.24)	1:51.42 [1] (0:11.39)	1:40.03 [1] (0:12.35)	1:27.68 [1] (0:12.89)	1:14.79 [1] (0:13.12)	1:01.67 [1] (0:13.11)	0:48.56 [1] (0:12.36)	0:36.20 [1] (0:11.73)	0:24.47 [1] (0:12.02)	0:12.45 [1] (0:12.45)
Average Speed [km/h]	43.5	64.0	62.8	58.1	55.6	55.2	55.4	58.4	61.2	59.7	57.8
Top Speed [km/h]	62.1	65.1	64.6	60.0	56.9	56.6	56.0	60.6	61.7	61.6	59.4
Avg. Dist. to Rail [m]	8.7	3.6	1.4	1.2	0.8	1.2	2.3	0.7	0.5	0.5	0.9
Avg. Stride Freq. [Hz]	2.2	2.4	2.4	2.3	2.2	2.2	2.2	2.2	2.3	2.3	2.2
Avg. Stride Length [m]	5.7	7.5	7.4	7.1	7.1	7.0	7.1	7.3	7.4	7.2	7.1



- [] Ranking at each section and finish
- .-.- No data available at this section
- NA No data available



Horse/Jockey Name	Decarbonise
Final Rank	3
Fastest Section Time (Section)	0:11.55 (2000m)
Top Speed [km/h] (Section)	64.2 (2000m)
Race State	Finished



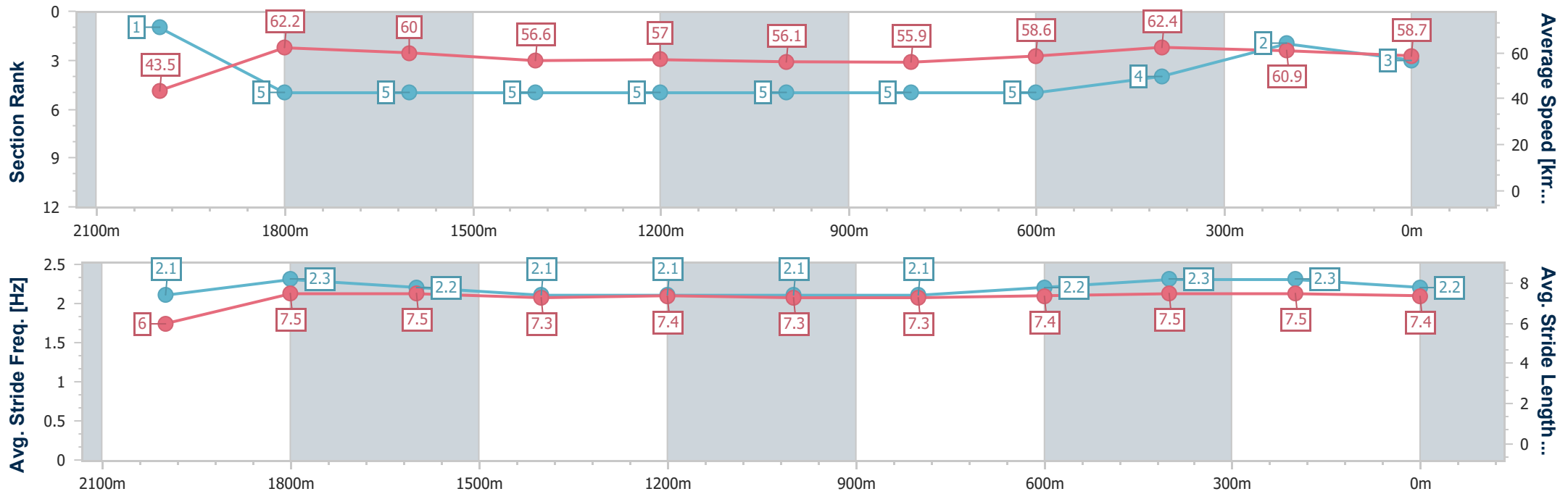
Ipswich QLD Professional
Race 5: GREAT NORTHERN BENCHMARK 62 Handicap - 2150m



04 January 2025 - 14:24

Track Rating: Soft 5, Weather: Fine, Rail Position: True

Section	Overall	2000m	1800m	1600m	1400m	1200m	1000m	800m	600m	400m	200m
Section Times	2:15.26 [3] (0:12.41)	2:02.85 [1] (0:11.55)	1:51.30 [5] (0:11.85)	1:39.45 [5] (0:12.69)	1:26.76 [5] (0:12.68)	1:14.08 [5] (0:12.94)	1:01.14 [5] (0:12.93)	0:48.21 [5] (0:12.39)	0:35.82 [5] (0:11.69)	0:24.13 [4] (0:11.90)	0:12.23 [2] (0:12.23)
Average Speed [km/h]	43.5	62.2	60.0	56.6	57.0	56.1	55.9	58.6	62.4	60.9	58.7
Top Speed [km/h]	60.2	64.2	63.1	57.6	57.3	56.8	56.6	61.1	62.5	62.2	59.9
Avg. Dist. to Rail [m]	2.4	0.5	1.5	0.5	0.6	2.0	2.4	1.8	2.9	2.5	4.0
Avg. Stride Freq. [Hz]	2.1	2.3	2.2	2.1	2.1	2.1	2.1	2.2	2.3	2.3	2.2
Avg. Stride Length [m]	6.0	7.5	7.5	7.3	7.4	7.3	7.3	7.4	7.5	7.5	7.4



- [] Ranking at each section and finish
- .-.- No data available at this section
- NA No data available



Horse/Jockey Name	Giddy Gan's Joy
Final Rank	4
Fastest Section Time (Section)	0:11.42 (2000m)
Top Speed [km/h] (Section)	64.7 (2000m)
Race State	Finished



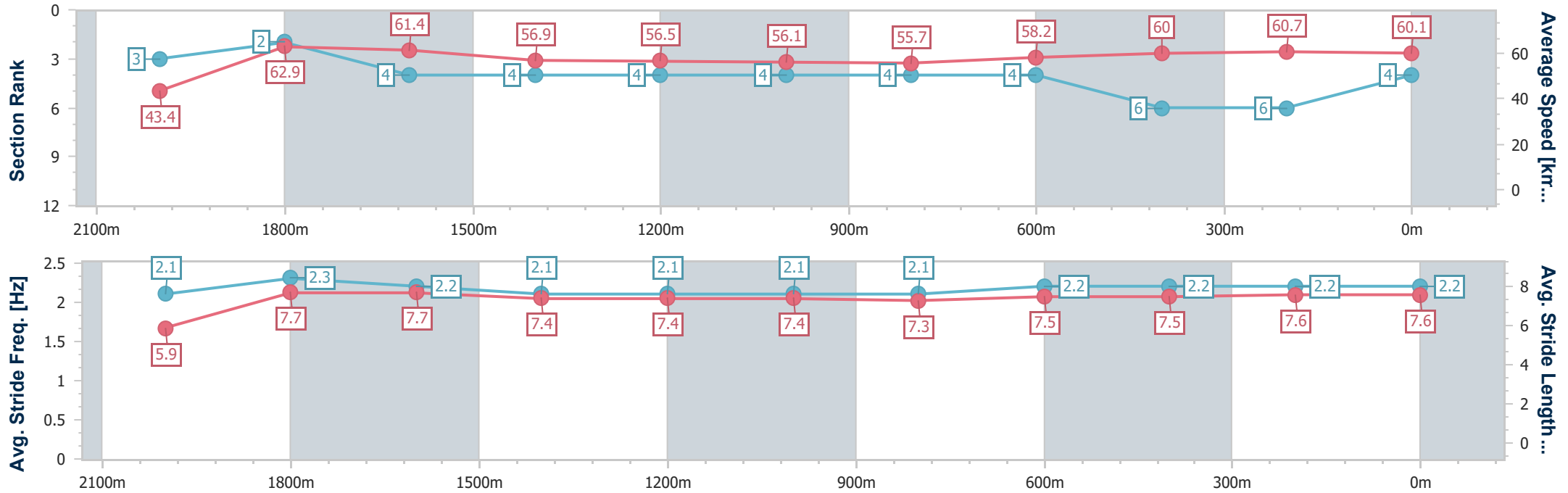
Ipswich QLD Professional
Race 5: GREAT NORTHERN BENCHMARK 62 Handicap - 2150m



04 January 2025 - 14:24

Track Rating: Soft 5, Weather: Fine, Rail Position: True

Section	Overall	2000m	1800m	1600m	1400m	1200m	1000m	800m	600m	400m	200m
Section Times	2:15.29 [4] (0:12.48)	2:02.81 [3] (0:11.42)	1:51.39 [2] (0:11.70)	1:39.69 [4] (0:12.67)	1:27.02 [4] (0:12.75)	1:14.27 [4] (0:12.96)	1:01.31 [4] (0:12.95)	0:48.36 [4] (0:12.43)	0:35.93 [4] (0:12.06)	0:23.87 [6] (0:11.90)	0:11.97 [6] (0:11.97)
Average Speed [km/h]	43.4	62.9	61.4	56.9	56.5	56.1	55.7	58.2	60.0	60.7	60.1
Top Speed [km/h]	60.4	64.7	64.1	57.7	57.0	56.7	56.6	60.2	60.6	61.0	61.2
Avg. Dist. to Rail [m]	5.2	0.9	0.6	0.4	0.7	1.8	2.3	1.2	1.0	1.8	5.5
Avg. Stride Freq. [Hz]	2.1	2.3	2.2	2.1	2.1	2.1	2.1	2.2	2.2	2.2	2.2
Avg. Stride Length [m]	5.9	7.7	7.7	7.4	7.4	7.4	7.3	7.5	7.5	7.6	7.6



- [] Ranking at each section and finish
- .-.- No data available at this section
- NA No data available



Horse/Jockey Name	Reel Wild
Final Rank	5
Fastest Section Time (Section)	0:11.62 (600m)
Top Speed [km/h] (Section)	63.5 (600m)
Race State	Finished



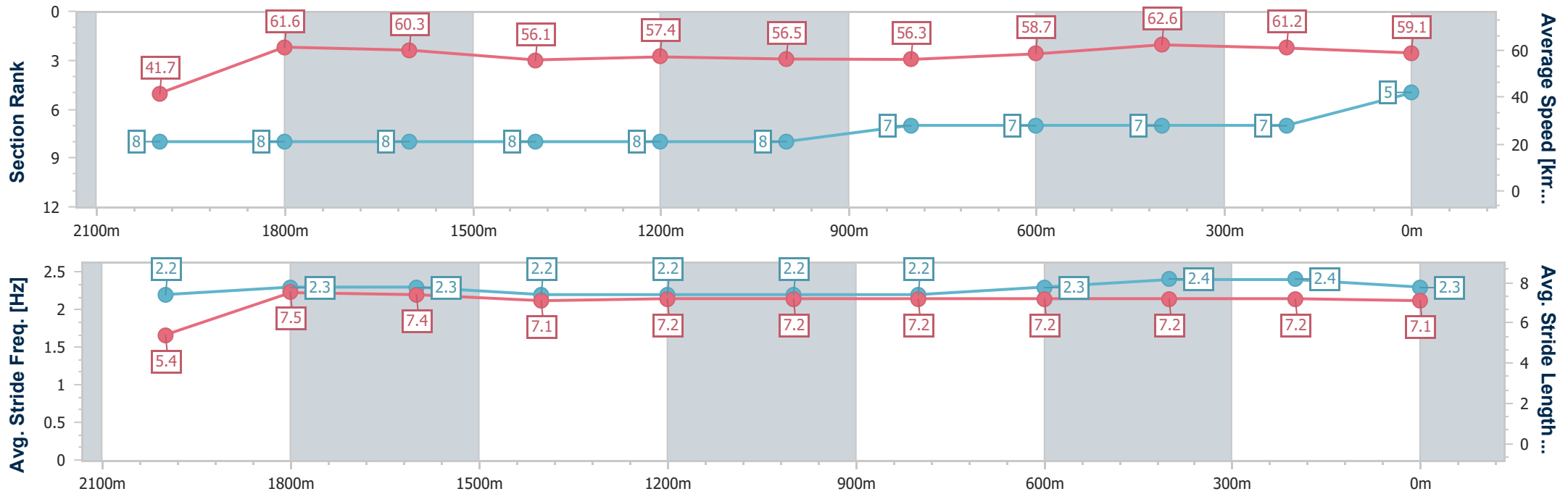
Ipswich QLD Professional
 Race 5: GREAT NORTHERN BENCHMARK 62 Handicap - 2150m



04 January 2025 - 14:24

Track Rating: Soft 5, Weather: Fine, Rail Position: True

Section	Overall	2000m	1800m	1600m	1400m	1200m	1000m	800m	600m	400m	200m
Section Times	2:15.54 [5] (0:13.02)	2:02.52 [8] (0:11.66)	1:50.86 [8] (0:11.86)	1:39.00 [8] (0:12.83)	1:26.17 [8] (0:12.53)	1:13.64 [8] (0:12.83)	1:00.81 [8] (0:12.84)	0:47.97 [7] (0:12.33)	0:35.64 [7] (0:11.62)	0:24.02 [7] (0:11.83)	0:12.19 [7] (0:12.19)
Average Speed [km/h]	41.7	61.6	60.3	56.1	57.4	56.5	56.3	58.7	62.6	61.2	59.1
Top Speed [km/h]	59.0	62.6	62.6	56.8	59.0	56.9	58.2	60.4	63.5	62.5	60.2
Avg. Dist. to Rail [m]	7.5	0.4	1.1	0.2	0.4	1.2	2.1	1.5	2.4	3.1	8.3
Avg. Stride Freq. [Hz]	2.2	2.3	2.3	2.2	2.2	2.2	2.2	2.3	2.4	2.4	2.3
Avg. Stride Length [m]	5.4	7.5	7.4	7.1	7.2	7.2	7.2	7.2	7.2	7.2	7.1



- [] Ranking at each section and finish
- .-.- No data available at this section
- NA No data available



Horse/Jockey Name	Toolatamate
Final Rank	6
Fastest Section Time (Section)	0:11.48 (2000m)
Top Speed [km/h] (Section)	65.1 (1800m)
Race State	Finished



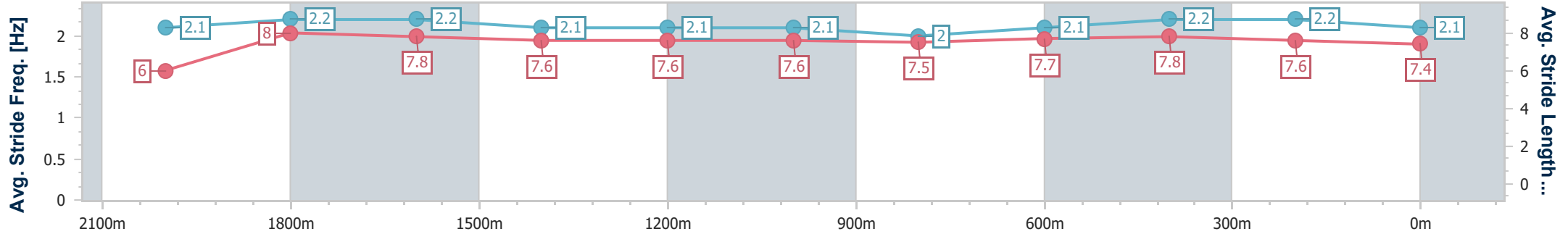
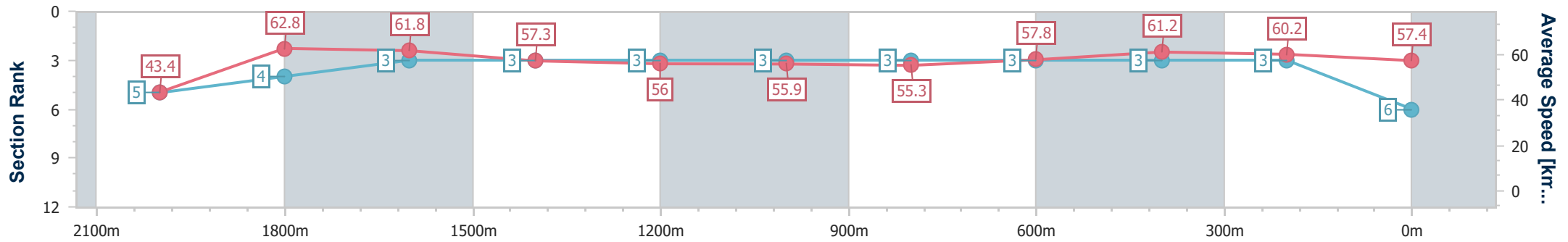
Ipswich QLD Professional
Race 5: GREAT NORTHERN BENCHMARK 62 Handicap - 2150m



04 January 2025 - 14:24

Track Rating: Soft 5, Weather: Fine, Rail Position: True

Section	Overall	2000m	1800m	1600m	1400m	1200m	1000m	800m	600m	400m	200m
Section Times	2:15.60 [6] (0:12.48)	2:03.12 [5] (0:11.48)	1:51.64 [4] (0:11.52)	1:40.12 [3] (0:12.52)	1:27.60 [3] (0:12.83)	1:14.77 [3] (0:12.91)	1:01.86 [3] (0:13.07)	0:48.79 [3] (0:12.47)	0:36.32 [3] (0:11.81)	0:24.51 [3] (0:11.97)	0:12.54 [3] (0:12.54)
Average Speed [km/h]	43.4	62.8	61.8	57.3	56.0	55.9	55.3	57.8	61.2	60.2	57.4
Top Speed [km/h]	60.7	65.1	65.1	59.0	56.7	56.9	56.1	60.7	61.6	61.5	59.6
Avg. Dist. to Rail [m]	2.0	0.5	1.3	1.0	0.5	0.9	1.4	0.5	0.5	1.3	2.4
Avg. Stride Freq. [Hz]	2.1	2.2	2.2	2.1	2.1	2.1	2.0	2.1	2.2	2.2	2.1
Avg. Stride Length [m]	6.0	8.0	7.8	7.6	7.6	7.6	7.5	7.7	7.8	7.6	7.4



- [] Ranking at each section and finish
- .-.- No data available at this section
- NA No data available



Horse/Jockey Name	Classique Gal
Final Rank	7
Fastest Section Time (Section)	0:11.41 (1800m)
Top Speed [km/h] (Section)	65.6 (1800m)
Race State	Finished



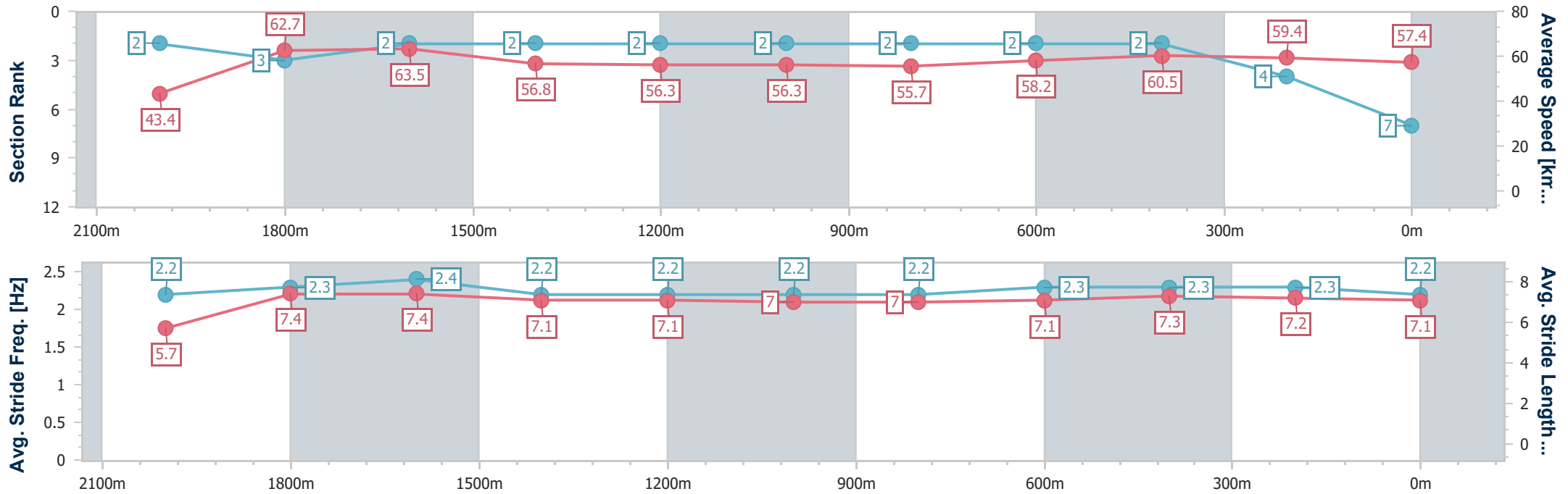
Ipswich QLD Professional
Race 5: GREAT NORTHERN BENCHMARK 62 Handicap - 2150m



04 January 2025 - 14:24

Track Rating: Soft 5, Weather: Fine, Rail Position: True

Section	Overall	2000m	1800m	1600m	1400m	1200m	1000m	800m	600m	400m	200m
Section Times	2:15.68 [7] (0:12.42)	2:03.26 [2] (0:11.48)	1:51.78 [3] (0:11.41)	1:40.37 [2] (0:12.67)	1:27.70 [2] (0:12.80)	1:14.90 [2] (0:12.88)	1:02.02 [2] (0:13.01)	0:49.01 [2] (0:12.41)	0:36.60 [2] (0:11.95)	0:24.65 [2] (0:12.13)	0:12.52 [4] (0:12.52)
Average Speed [km/h]	43.4	62.7	63.5	56.8	56.3	56.3	55.7	58.2	60.5	59.4	57.4
Top Speed [km/h]	60.1	63.4	65.6	58.6	57.3	57.3	56.2	60.6	61.0	60.6	59.9
Avg. Dist. to Rail [m]	6.3	2.2	1.1	0.3	0.6	1.6	2.0	1.2	0.6	0.7	1.4
Avg. Stride Freq. [Hz]	2.2	2.3	2.4	2.2	2.2	2.2	2.2	2.3	2.3	2.3	2.2
Avg. Stride Length [m]	5.7	7.4	7.4	7.1	7.1	7.0	7.0	7.1	7.3	7.2	7.1



- [] Ranking at each section and finish
- .-.- No data available at this section
- NA No data available



Horse/Jockey Name	Apfel
Final Rank	8
Fastest Section Time (Section)	0:11.54 (2000m)
Top Speed [km/h] (Section)	64.7 (1800m)
Race State	Finished



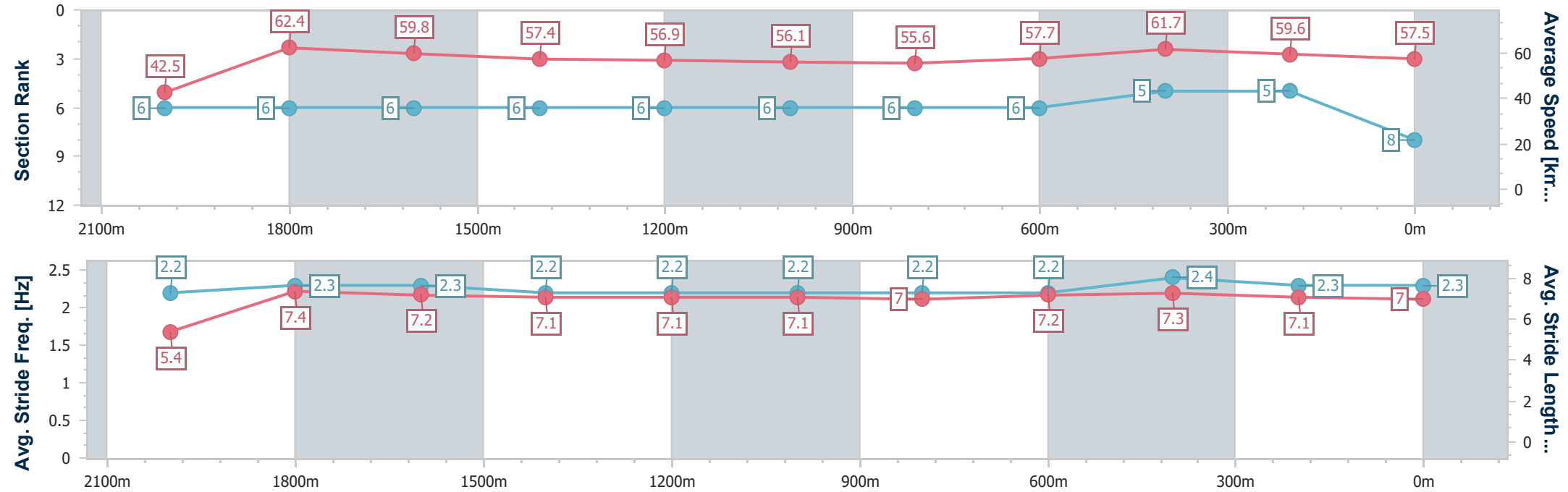
Ipswich QLD Professional
Race 5: GREAT NORTHERN BENCHMARK 62 Handicap - 2150m



04 January 2025 - 14:24

Track Rating: Soft 5, Weather: Fine, Rail Position: True

Section	Overall	2000m	1800m	1600m	1400m	1200m	1000m	800m	600m	400m	200m
Section Times	2:15.83 [8] (0:12.73)	2:03.10 [6] (0:11.54)	1:51.56 [6] (0:11.89)	1:39.67 [6] (0:12.54)	1:27.13 [6] (0:12.66)	1:14.47 [6] (0:12.87)	1:01.60 [6] (0:12.95)	0:48.65 [6] (0:12.48)	0:36.17 [6] (0:11.65)	0:24.52 [5] (0:12.00)	0:12.52 [5] (0:12.52)
Average Speed [km/h]	42.5	62.4	59.8	57.4	56.9	56.1	55.6	57.7	61.7	59.6	57.5
Top Speed [km/h]	60.3	64.0	64.7	58.4	57.5	56.6	56.1	60.1	63.3	61.1	59.3
Avg. Dist. to Rail [m]	2.2	1.2	1.3	0.8	0.4	0.5	0.9	0.2	0.5	1.5	0.9
Avg. Stride Freq. [Hz]	2.2	2.3	2.3	2.2	2.2	2.2	2.2	2.2	2.4	2.3	2.3
Avg. Stride Length [m]	5.4	7.4	7.2	7.1	7.1	7.1	7.0	7.2	7.3	7.1	7.0



- [] Ranking at each section and finish
- .-.- No data available at this section
- NA No data available